



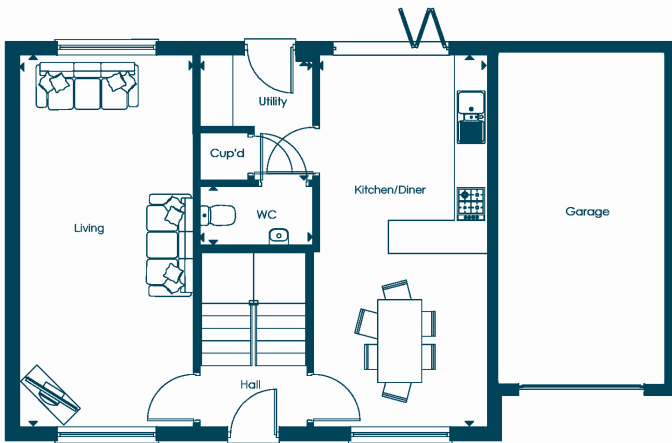
# PLOT 15

Green Valley Meadow,  
Lifton, Devon.

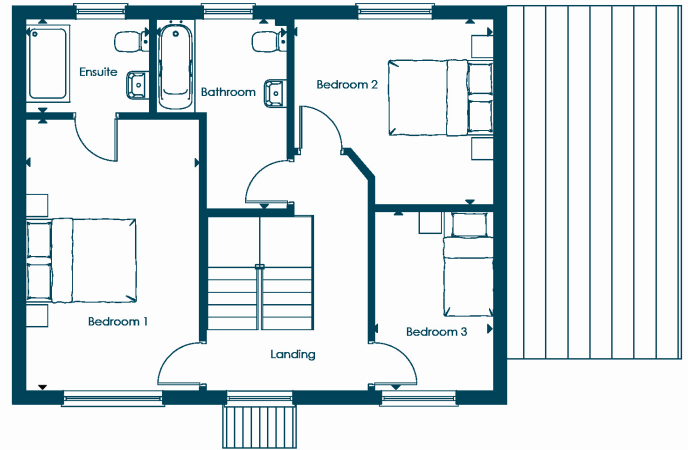
- 3 Bedrooms (Master Ensuite)
- Large living room, kitchen, diner & utility
- East facing garden
- Attached single garage with 2 parking spaces



Ground Floor



First Floor



Ground Floor

Living:	6.74m x 3.16m	22'2" x 10'4"
Kitchen/Diner:	6.74m x 3.15m	22'2" x 10'4"
Utility:	2.26m x 1.96m	7'5" x 6'5"
WC:	1.94m x 1.06m	6'5" x 3'6"

First Floor

Bedroom 1:	4.93m x 3.16m	16'2" x 10'4"
Bedroom 2:	3.62m x 3.37m	11'11" x 11'1"
Bedroom 3:	3.25m x 2.16m	10'8" x 7'1"
Bathroom:	3.44m x 2.38m	11'4" x 7'10"
Ensuite:	2.25m x 1.70m	7'5" x 5'7"

Measurements supplied are based on the maximum dimension per room/space.

*Harrington* | HOMES

📞 T: 01566 457199

✉️ lifton@harrington-homes.co.uk



🌐 www.harringtonhomes.co.uk

Disclaimer: All images are for illustrative purposes. We endeavour to provide reliable and accurate sales particulars but individual properties may differ. Plans are not to scale and should not be relied upon, the dimensions provided are to be used as a guide only and should not be used to order carpets or furniture. Room dimensions show the maximum dimensions which includes areas of fixtures, fittings and fitted furniture. Although all care is taken to ensure this information is correct, contents do not constitute a contract, or part of a contract unless specifically incorporated in writing into the contract.