



# PLOT 7

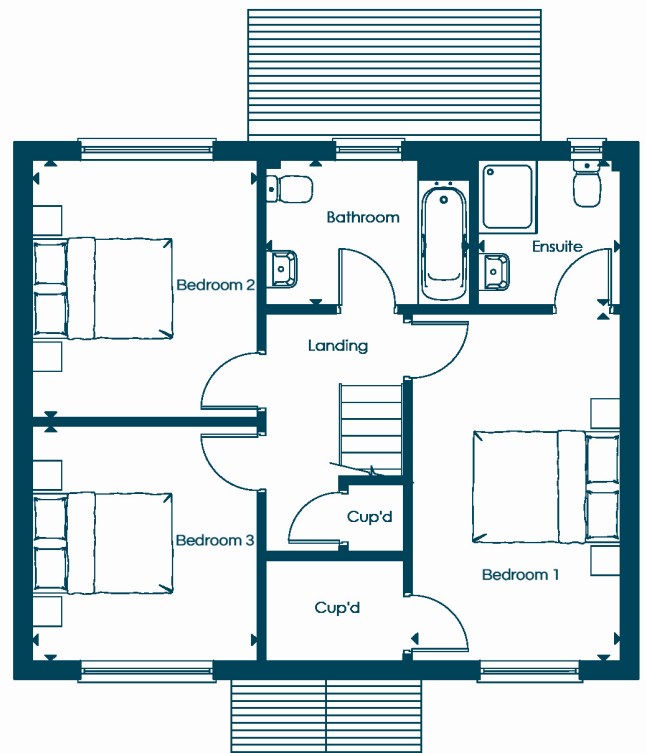
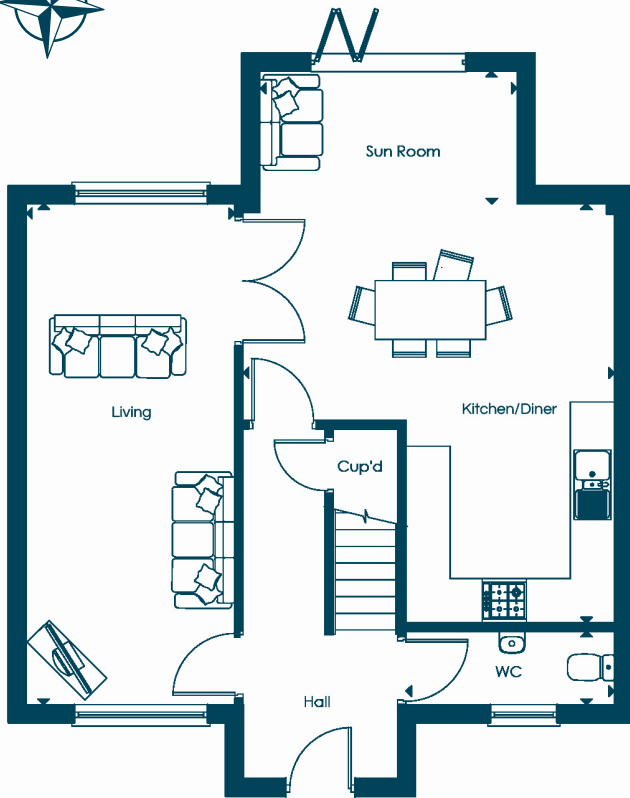
Green Valley Meadow,  
Lifton, Devon.

- 3 Bedrooms (Master Ensuite)
- Large living room & kitchen, diner
- Sun room & west facing garden
- 2 parking spaces



## Ground Floor

## First Floor



### Ground Floor

Living:	6.81m x 2.83m	22'4" x 9'4"
Kitchen/Diner:	5.69m x 5.04m	18'6" x 16'5"
Sun Room:	3.49m x 1.80m	11'6" x 5'11"
WC:	2.83m x 0.99m	9'4" x 3'3"

### First Floor

Bedroom 1:	4.72m x 2.83m	15'6" x 9'4"
Bedroom 2:	3.50m x 3.05m	11'6" x 10'0"
Bedroom 3:	3.19m x 3.05m	10'6" x 10'0"
Bathroom:	2.77m x 1.97m	9'1" x 6'6"
Ensuite:	1.97m x 1.93m	6'6" x 6'4"

Measurements supplied are based on the maximum dimension per room/space.

*Harrington* | HOMES

T: 01566 457199

lifton@harrington-homes.co.uk



www.harringtonhomes.co.uk

Disclaimer: All images are for illustrative purposes. We endeavour to provide reliable and accurate sales particulars but individual properties may differ. Plans are not to scale and should not be relied upon, the dimensions provided are to be used as a guide only and should not be used to order carpets or furniture. Room dimensions show the maximum dimensions which includes areas of fixtures, fittings and fitted furniture. Although all care is taken to ensure this information is correct, contents do not constitute a contract, or part of a contract unless specifically incorporated in writing into the contract.