



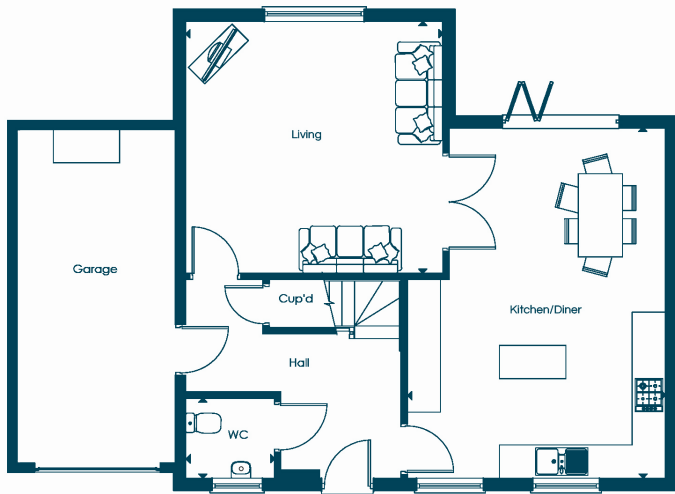
# PLOT 19

Green Valley Meadow,  
Lifton, Devon.

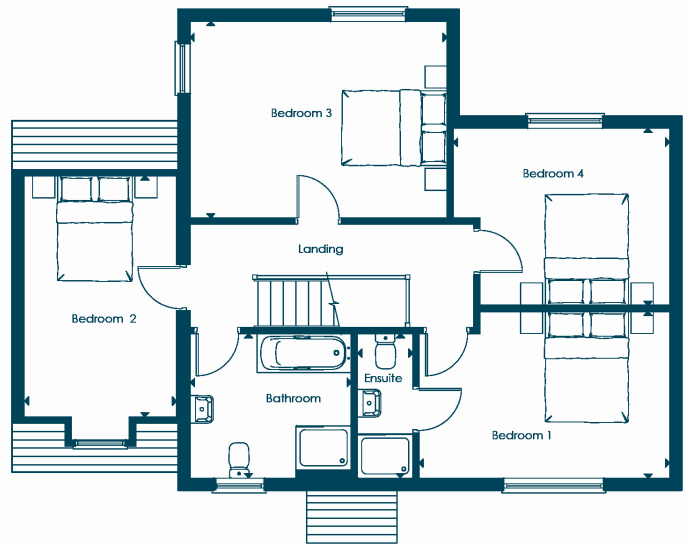
- 4 Bedrooms (Master Ensuite)
- Large living room & kitchen, diner
- Substantial garden
- Single garage with 2 parking spaces



Ground Floor



First Floor



Ground Floor

Living:	4.22m x 5.35m	13'10" x 17'7"
Kitchen/Diner:	6.32m x 5.52m	20'9" x 18'1"
WC:	1.60m x 1.44m	5'3" x 4'9"

First Floor

Bedroom 1:	4.35m x 2.75m	14'4" x 9'0"
Bedroom 2:	4.53m x 3.01m	14'11" x 9'11"
Bedroom 3:	3.91m x 3.19m	12'10" x 10'6"
Bedroom 4:	4.64m x 3.54m	15'3" x 11'8"
Bathroom:	2.91m x 2.61m	9'7" x 8'7"
Ensuite:	2.61m x 1.0m	8'7" x 3'3"

Measurements supplied are based on the maximum dimension per room/space.

*Harrington* | HOMES

T: 01566 457199

lifton@harrington-homes.co.uk



www.harringtonhomes.co.uk

Disclaimer: All images are for illustrative purposes. We endeavour to provide reliable and accurate sales particulars but individual properties may differ. Plans are not to scale and should not be relied upon, the dimensions provided are to be used as a guide only and should not be used to order carpets or furniture. Room dimensions show the maximum dimensions which includes areas of fixtures, fittings and fitted furniture. Although all care is taken to ensure this information is correct, contents do not constitute a contract, or part of a contract unless specifically incorporated in writing into the contract.